

## Fire Listings, Matrix of Approvals & Limits of Use

Max Size Allowed	Limitations	Max Hourly Rating	Neutral or Positive Pressure	Maximum Glass Size Allowed	Single, Pairs or Double Egress
3'0" x 7'0"	Unit, Mortise, or Cylindrical Latches/Deadbolts max 2 3/4" backset, door bottoms, thresholds.	20 Minutes	Neutral Pressure	792 square inches	Single Only
3'0" x 7'0"	Unit, Mortise, or Cylindrical Latches/Deadbolts max 2 3/4" backset, Mortise Exit Devices/Surface mounted Vertical Rod Fire Exit Devices, RIM Type Fire Exit Devices/Surface Mounted Closers, door bottoms, thresholds.	90 Minutes	Neutral Pressure	100 square inches	Single Only
3'0" x 7'0"	Unit, Mortise, or Cylindrical Latches/Deadbolts max 2 3/4" backset, Mortise Exit Devices/Surface mounted Vertical Rod Fire Exit Devices, RIM Type Fire Exit Devices/Surface Mounted Closers, door bottoms, thresholds.	20 Minutes	Neutral Pressure	792 square inches	Single Only
3'6" x 7'0"	Unit, Mortise, or Cylindrical Latches/Deadbolts max 5" backset, Mortise Exit Devices/Surface mounted Vertical Rod Fire Exit Devices, RIM Type Fire Exit Devices/Surface Mounted Closers, door bottoms, thresholds.	90 Minutes	Positive Pressure	100 square inches	Single Only
3'0" x 8'0"	Unit, Mortise, or Cylindrical Latches/Deadbolts max 2 3/4" backset, Mortise Exit Devices/Surface mounted Vertical Rod Fire Exit Devices, RIM Type Fire Exit Devices/Surface Mounted Closers, door bottoms, thresholds.	20 Minutes	Neutral Pressure	792 square inches	Single Only
3'0" x 8'0"	Unit, Mortise, or Cylindrical Latches/Deadbolts max 2 3/4" backset, Mortise Exit Devices/Surface mounted Vertical Rod Fire Exit Devices, RIM Type Fire Exit Devices/Surface Mounted Closers, door bottoms, thresholds.	90 Minutes	Neutral Pressure & Positive Pressure	100 square inches	Single Only
4'0" x 8'0"	20 Gauge Only, Unit, Mortise, or Cylindrical Latches/Deadbolts max 2 3/4" backset, Mortise Exit Devices/Surface mounted Vertical Rod Fire Exit Devices, RIM Type Fire Exit Devices/Surface Mounted Closers, door bottoms, thresholds.	90 Minutes	Positive Pressure	100 square inches	Single Only



**Testing everywhere for markets anywhere.**

LISTING INFORMATION OF Durador 20-90 Min Hollow Metal Fire Door

SPEC ID: 8899

Taylor Building Products  
631 North 1st Street  
P O Box 457  
West Branch, MI 48661

This report is for the exclusive use of Intertek's Client and is provided pursuant to the agreement between Intertek and its Client. Intertek's responsibility and liability are limited to the terms and conditions of the agreement. Intertek assumes no liability to any party, other than to the Client in accordance with the agreement, for any loss, expense or damage occasioned by the use of this report. Only the Client is authorized to copy or distribute this report and then only in its entirety. Any use of the Intertek name or one of its marks for the sale or advertisement of the tested material, product or service must first be approved in writing by Intertek. The observations and test results in this report are relevant only to the sample tested. This report by itself does not imply that the material, product, or service is or has ever been under an Intertek certification program. To verify a listing, call 888-347-5478, or check our searchable online Directory of Listed Products at [www.intertek.com](http://www.intertek.com).

## NEUTRAL PRESSURE DOORS

Durador Hollow Metal Type (18, 24, 26 gauge) (Steel-Faced) (Foam-Filled), Swinging, Embossed Design Fire Door for installation in single swing 20 minute to 3/4 hour locations.

### Limitations

Unit, Mortise or Cylindrical Latches/Deadbolts/Door Bottoms/Thresholds/4" x 4" x 0.098" Hinges.

### Maximum Size

SINGLE SWING 3'-0" wide x 6'-8" high

Durador Hollow Metal Type (24 gauge) (Foam-filled) Swinging Embossed or Flush Design Fire Doors for installation singly in 20 minute locations

### Limitations

Unit, Mortise or Cylindrical Latches with up to 2-3/4" backset/Lights - up to 792 sq. in.

### Maximum Size

SINGLE SWING 3'-0" wide x 7'-0" high  
STANDARD PAIRS Not Allowed

Durador Hollow Metal Type (24 gauge) (Foam-filled) Swinging Embossed or Flush Design Fire Doors for installation singly in 20 minute locations with no hose stream.

### Limitations

Unit, Mortise or Cylindrical Latches with up to 2-3/4" backset/Lights - up to 792 sq.in.

### Maximum Size

SINGLES 3'-0" wide x 7'-0" high  
PAIRS Not Allowed

\*Manufacturer's Designation

Durador Steel-Faced (22, 24 gauge) (Urethane Core Type) Swinging Flush Door for installation in 1-1/2 hour locations. For use in listed 3-sided frames as per frame manufacturer's listing(s)

### Limitations\*

Mortise or Cylindrical Latches with maximum 2-3/4" backset/Mortised Exit devices/Surface

Mounted Vertical Rod Fire Exit Devices/Rim Type Fire Exit Devices/Deadbolts/Surface Mounted Closers/Surface Mounted Protection Plates/Viewer/Vision Light Kit - Maximum 792 sq.in (1/3, 3/4 hour) or 100 sq.in. (1, 1-1/2 hour)/Gasketing - listed and labeled for opening.

### Maximum Size

SINGLE SWING 3'-0" wide x 7'-0" high  
STANDARD PAIRS Not Allowed  
DOUBLE EGRESS PAIRS Not Allowed

\* See Manufacturer's installation instructions for additional information on size restrictions and limitations

### ADDITIONAL LISTEE

PERMA-DOOR

### Evaluated to the following...

Unless otherwise noted, assemblies in this section have been evaluated for conformance to the following standards:

ASTM-E152, Methods of Fire Tests of Door Assemblies  
CSFM-43.7, Methods of Fire Tests of Door Assemblies  
CAN4-S104(ULC-S104), Standard Method for Fire Tests of Door Assemblies  
NFPA-252, Standard Methods for Fire Tests of Door Assemblies  
UBC-7-2-94, Uniform Building Code  
UL-10(b), Fire Tests of Door Assemblies

and are installed in accordance with the following:

NFPA-80, Fire Doors and Windows

### Manufacturer's Instructions

All assemblies are identified by a label or marking bearing the wording, "Listed (Product)", a time interval, temperature rise (if applicable), a serial number and the WHI Certification Mark.

(Unless otherwise specified, all Fire Doors have a nominal thickness of 1-3/4".)

### CATEGORY B DOOR POSITIVE PRESSURE

Durador Steel-Faced (22, 24 gauge) (Urethane Core) (Simulated Panel or Flush Type) Swinging Flush Door for installation in up to 90 minute (without hose stream) locations. For use in any "Category C - Standard frame. These doors may also be installed in frames listed in "Category C - Proprietary" in accordance with the frame manufacturer's individual listing. A field-applied edge seal system is required. Refer to the individual manufacturer's Category G listing for limitations.

Limitations\*

Mortise or Cylindrical Latches with maximum 5" Backset/Mortised Exit Devices/Surface Mounted Vertical Rod Fire Exit Devices/Rim-Type Fire Exit Devices/Deadbolts/Surface-Mounted Closers/Viewer/Surface-Mounted Door Bottoms. Temperature Rise - 650°F at 30 minutes.

MAXIMUM SIZE

SINGLE SWING 3'-6" wide x 7'-0" high  
STANDARD PAIRS Not Allowed  
DOUBLE EGRESS PAIRS Not Allowed

\*See manufacturer's installation instructions for additional information on Smoke and Draft Control, size restrictions and limitations.

Testing Standards: UBC-7-2-97/UL-10C (Positive Pressure).

Evaluated to the following...

This category includes doors evaluated with an edge-sealing system (Category G) field-applied to the labeled frame or door. The application of the edge-sealing system does not require any machining of the frame or door. Please refer to "Category G - Edge-Sealing System" for individual manufacturer's listings.

These assemblies are eligible for use in any "Category C - Standard" frame. These doors may also be installed in frames listed in "Category C - Proprietary" in the accordance with the frame manufacturer's individual listing.

All doors listed in Category B are eligible to bear the "S" (for Smoke & Draft Control assemblies) if a listed "Category H - Smoke & Draft Control Gasket" has been applied to the assembly. Please refer to Category H for individual gasket manufacturer's listings.

All doors in this category are identified by a label or marking bearing the wording, "Listed Fire Door", a time interval, a temperature rise rating, a serial number and the Warnock Hersey Certification Mark and "UBC-7-2-97/UL 10C".

Attribute	Value
Architecture Code	08100 Metal Doors and Frames
Architecture Subcode	08110 Metal Doors
Client Number	14964
Criteria	NFPA-80
Criteria	NFPA 252 (1995)
Criteria	ASTM E152-81a
Criteria	CSFM-43.7
Criteria	CAN4-S104 (ULC-S104) (1985)

**FN24S 30 68 RU4 FL 5/04/99**

Other information that must be indicated on the top of the door. Closer reinforcement is optional. When it is provided, the door must then have a sticker on its top stating "CLOSER REINFORCEMENT IS PROVIDED".

**DOORS COVERED:**

Under Taylor Building Products: Taylor Door; Economy, DuraDoor, UniDoor, Regal; Perma Door; Economy, Simplicity, Royal, Regency

**RATING AND SIZE (inches):**

	Thickness	Maximum Width	Maximum Height
Single Swing, Flush and Embossed (1/3, 3/4, 1, and 1-1/2 Hour Ratings)	1-3/4 minus 1/16	36	96
Single Swing, Flush and Embossed (1/3 Hour without Hose Steam)	1-3/4 minus 1/16	42	84

**HARDWARE**

(Preparation for Installation)

**Hinges:** Per NFPA 80 or Minimum 4" by 4" by 0.097". Preparation is done during manufacture.

**Latches:** Only listed and labeled for use with rated openings. Any preparation must leave at least 1/2-inch wood surrounding hardware. Use hardware manufacturer's template. Minimum 1/2" bolt throw. Preparation for latches is done during manufacturing.

Cylindrical: 2-3/8" or 2-3/4" backset; Maximum bore 2-1/8"

Mortised: Maximum block cutout size 6.375" long by 4.00" deep by 1.00" wide (Maximum Tolerances: + 1/8 inch width / +1/4 inch depth / + 1/2 inch length (1/4 inch both ends) **For positive pressure applications:** Intumesc intumescent must be applied behind the rosettes of all latches.

**Dead Bolt (where permitted):**

For Wood Lock Block: 2-3/8" or 2-3/4" inch backset; Maximum 2-1/8" bore; Dead lock bore a minimum 2-7/8" (or maximum 11") centerline dead lock to centerline cylindrical latch. Any preparation must leave at least 1/2-inch wood surrounding hardware.

For Alternative Standard or Universal Combination Lock Block: 2-3/8" or 2-3/4" inch backset; Maximum 2-1/8" bore; Dead lock bore a minimum 5-1/2" (or maximum 11") centerline dead lock to centerline cylindrical latch.

**Fire Exit Hardware:** Surface Mounted Vertical Rods; Rim Type Exit Device; or Mortise Type exit Device. Install Surface mounted hardware with through bolts unless reinforcement is provided.

**Closers:** Listed and labeled Surface Mounted Closers

Closer reinforcement is optional. When it is provided, the door must then have a sticker on its top stating "CLOSER



REINFORCEMENT IS PROVIDED". If closer reinforcement is not provided then install closers with through bolts.

**Weatherstrip:** Listed and labeled for rated opening

**Kickplates:** Protection plates of brass, bronze, steel, aluminum, polycarbonate, or decorative laminate may be applied with fully-threaded wood screws with a minimum size No. 6 by 3/4 inch, spaced a minimum 6 inch on center around the perimeter of the plate. The top of the plate shall be a maximum of 16 inches above the bottom of the door. Plates may be installed on one or both sides of the door.

**Louvers:** Not Allowed

**Viewers:** Listed and labeled for rated opening

**Vision Panels:** Listed and labeled for rated opening. Refer to Figure 2.

#### NEUTRAL PRESSURE ASSEMBLIES

Rating (Hours)	Maximum Visible Area (in <sup>2</sup> )	Maximum Visible Width (inches)	Maximum Visible Height (inches)
1/3 & 3/4	792	22	36
1/3, 3/4 1 & 1-1/2	100	12	33

#### POSITIVE PRESSURE ASSEMBLIES

Rating (Hours)	Maximum Visible Area (in <sup>2</sup> )	Maximum Visible Width (inches)	Maximum Visible Height (inches)
1/3, 3/4, 1 & 1-1/2	100	12	33

Cutouts for glazing must be a minimum of 6 inches from edge of cutout to door edge and/or any other cutout.

All glazing must be listed. All glazing must be installed in accordance to the installation instructions from the glazing manufacturer. All limitations in the glazing listing are applicable.

An 18 gauge steel channel is required around the cutout of the vision panel.

#### FOR POSITIVE PRESSURE:

1/8 inch bead of PEMKO FG3000 around the perimeter of reinforcement.

PEMKO FG3000 shall be installed between listed and labeled glazing and listed and labeled light kit.

**Door Bottoms:** Doors are manufactured to receive a door bottom seal that slides into door bottom rail. Optional – Listed Surface Applied Door Bottom Seals.

#### CUTTING DOWN DOOR

Maximum height reduction of 4-inches, from the bottom only. Follow instructions found in Figure 5 of this specification.

#### CONVERSION OF DOOR FROM NEUTRAL PRESSURE TO POSITIVE PRESSURE:

Four (4) nominal 1/8" diameter rivets are used to attach face 'A' to face 'B'. Two Rivets are used on each vertical

door edge.

#### **MARKING:**

When all machining has been completed on the fire door, the Warnock Hersey ( ) certification label may be applied within the top 1/3 of hinge stile. The certification label shall be applied with 1/8 inch diameter rivets or adhered door edge with adhesive if mylar.

Exception: When a continuous type hinge is applied to the fire door, the WH certification label shall be attached to the top of the door.

The certification label shall contain (at a minimum):

Warnock Hersey Certification Mark ( ) with Country Identifiers <sup>[1]</sup><sub>[1]</sub>

The word "LISTED"

The product category "FIRE DOOR"

Fire Protection Rating

Serial Number

Listee's Name (If multiple plants, then location or location code shall be noted on label.)

The words "DO NOT REMOVE OR COVER THIS LABEL"

The words "SEE INSTALLATION INSTRUCTIONS"

#### **OTHER ITEMS <sup>[2]</sup><sub>[2]</sub>**

##### **POSITIVE PRESSURE statement:**

If the door is to be labeled for positive pressure, the following is required.

Required: The words "MEETS UBC 7-2-97 / UL 10C"

Optional: "POSITIVE PRESSURE"

##### **SMOKE AND DRAFT CONTROL statement:**

Required: The label shall provide the required positive pressure statements (see positive pressure requirements above).

The  mark

The words "SMOKE AND DRAFT CONTROL RATING REQUIRE A LISTED GASKET."

Optional: The words "SMOKE LEAKAGE < 3 cfm/ft<sup>2</sup> per UL 1784"

##### **TEMPERATURE RISE statement:**

UBC Requirement:

If the door is labeled as meeting UBC requirements, then a temperature statement is required on each door.

Required: The words "TEMP RISE @ 30 MIN. > 650°F MAX"

##### **WITHOUT HOSE STREAM**

For door openings not requiring hose stream test, then the label will state "20 MINUTE WITHOUT HOSE STREAM" <sup>[3]</sup><sub>[3]</sub>

##### **FIRE EXIT HARDWARE:**

Per NFPA 80 2-4.4.2 any and all doors to be equipped with Fire Exit Hardware shall have the statement "FIRE DOOR TO BE EQUIPPED WITH FIRE EXIT HARDWARE"

If the fire door is to have Surface-Mounted Fire Exit Hardware (as defined in NFPA 80 1-3.4) then the label shall state "FIRE DOOR TO BE EQUIPPED WITH SURFACE-MOUNTED FIRE EXIT HARDWARE."

##### **INSTALLATION INSTRUCTIONS:**

##### **FOR BOTH NEUTRAL PRESSURE AND POSITIVE PRESSURE DOORS:**

Installation instructions shall be packaged with all fire doors bearing the Warnock Hersey certification mark. The instructions shall include specific information regarding the installation of fire doors, and reference NFPA 80, "Standard for Installation of Fire Doors and Windows". At least the following information shall be provided in all instructions:

Surface-mounted hardware must be attached with through-bolts unless reinforcements are provided.

A maximum 1/8" clearance between the frame and door is allowed.

##### **FOR POSITIVE PRESSURE DOORS**



Special, detailed instructions shall be provided when doors bear the label indicating compliance with UBC 7-2-1997 / UL10C.

**OPTION 1:**

Listed and Labeled (3-sided) 16 gauge steel frames meeting ANSI A155.1/UL63 or other listed frames  
PEMKO gasket S88 or equivalent Category "H" Smoke and Draft Control Gasket and PEMKO HSS2000 shall be surface applied to the frame rabbet, or any other listed and labeled intumescent seal and smoke and control gasket.


An 18 gauge steel reinforcement with  $\frac{3}{4}$  inch legs required with a 1/8-inch bead of Pemko FG3000 around the perimeter of the reinforcement and Pemko FG3000 between listed and labeled glazing and listed and labeled light kit.


**OPTION 2:**

Listed and labeled (3-sided) 18/20/22 gauge steel frames, adjustable or fixed, with a 5/8 inch stop height and a kerf. (Refer to Figures 3 and 4.)

PEMKO gasket PK52 or equivalent Category "H" Smoke and Draft Control Gasket inserted into the kerf and PEMKO HSS2000 shall be surface applied to the frame rabbet, or any other listed and labeled intumescent seal and smoke and control gasket.

An 18 gauge steel reinforcement with  $\frac{3}{4}$  inch legs required with a 1/8-inch bead of Pemko FG3000 around the perimeter of the reinforcement and Pemko FG3000 between listed and labeled glazing and listed and labeled light kit.

If the door assembly is to receive the  mark on the fire-rating label, a statement to the effect of the following shall be made in the installation instructions:

"Note: For  (smoke and draft control rating), a listed Category "H" Smoke and Draft Control Gasket shall be installed to the opening. "

**OPTION 3 REQUIRED FOR 3'0" BY 8'0"(or smaller):**

Listed and labeled (3-sided) 18/20/22 gauge steel frames, adjustable or fixed, with a 5/8 inch stop height. (Refer to Figures 3 and 4.)

PEMKO HSS2000xS88 applied to stop or National Guard Products model 9500 applied to rabbet with Pemko S88 applied to stop, as a Category "H" Smoke and Draft Control Gasket, or any other listed and labeled intumescent seal and smoke and control gasket.

An 18 gauge steel reinforcement with  $\frac{3}{4}$  inch legs required with a 1/8-inch bead of Pemko FG3000 around the perimeter of the reinforcement and Pemko FG3000 between listed and labeled glazing and listed and labeled light kit.

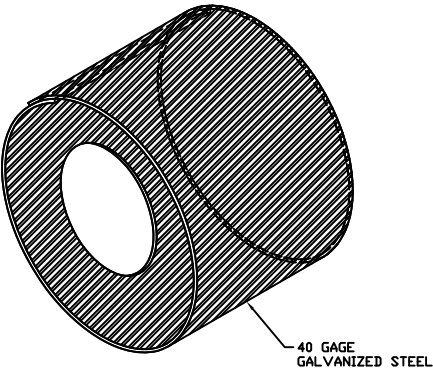
[1] "C" for Canada and "US" for United States. For doors both identifiers may be used except when the doors are 20 Minute Without Hose Stream. Then the "US" identifier only shall be used.

---

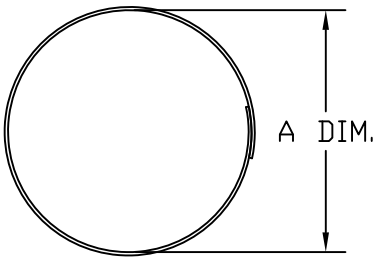
[2] Depending on code requirements or test results, some additional labeling information will be required.



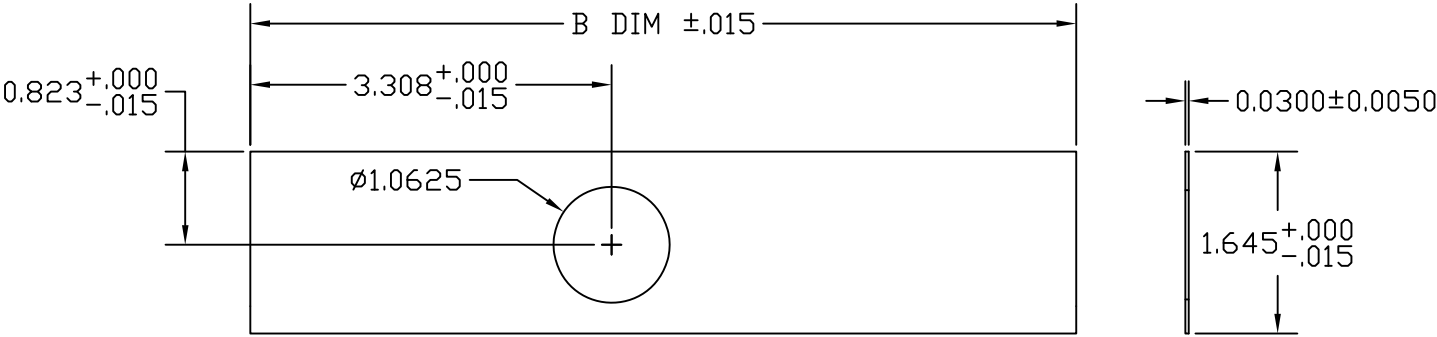
NOTE:INSTALLED ON ALL DOORS TO BE HUNG  
IN FIRE-RATED OPENINGS.



FORMED PART



SIZE	A	B
1-5/8"	1.625	5.671
2-1/8"	2.125	7.562



UNFORMED PART

# TAYLOR ENTRANCE SYSTEMS FIRE LABELS



90 Minute Mylar Neutral Pressure – 9YN – 53900040



90 Minute Metal Neutral Pressure – 9TN – 53900031



20 Minute Mylar Neutral Pressure – 2YN – 53900038



90 Minute Mylar Positive Pressure – 9YP – 53900044



90 Minute Metal Positive Pressure – 9TP - 599900045



**1-1/2 Hour (B)  
MAXIMUM  
FIRE RATING**

---

This Door  
meets all  
the requirements  
of NFPA-252,  
UL-10B

---

Fire Rating  
cannot exceed  
Fire Rating  
of the wall  
or frame.

*(Single swing only)*

Part # 53900041



**20 Min. (C)  
MAXIMUM  
FIRE RATING**

---

This Door  
meets all  
the requirements  
of NFPA-252,  
UL-10B

---

Fire Rating  
cannot exceed  
Fire Rating  
of the wall  
or frame.

*(Single swing only)*

Part # 53900050



AMERICA'S DOORMAKER

Taylor Entrance Systems STC & OITC Ratings Summary			
Description	ATI Test Report Number	STC	OITC
20 Gauge Steel Edge Door	M2914.05-113-11	21	25
20 Gauge Steel Edge Door with 1" I.G. Full Lite	M2914.06-113-11	28	25
22 Gauge Steel Edge Door	C1193.04-113-11	25	24
22 Gauge Steel Edge Door with 1" I.G. Full Lite	M2914.04-113-11	28	25
24 Gauge Steel Edge Door	C1193.05-113-11	22	23
24 Gauge Steel Edge Door with 1" I.G. Full Lite	M2914.02-113-11	25	24
25 Gauge Wood Edge Door	C1193.02-113-11	24	23
Fiberglass Door (Grand Marais)	C8441.01-113-11	25	24
Fiberglass Door (Timbergrain)	C1193.03-113-11	25	23

#### NOTES:

- 1) All testing conducted to the ASTM E90 test standard for Sound Transmission Loss.
- 2) For detailed information see test reports. Reports available upon request.
- 3) All results based on operable test units. Inoperable results available upon request.



2023 Energy Star® 6.0  
QUALIFYING UNITS MATRIX



AMERICA'S DOORMAKER

Smooth or Stainable Steel Doors (Steel Edge)	1/4 LITE				1/2 LITE				3/4 LITE			FULL LITE		SIDELITES		
Description -->	Craftsman	1/2 Rnd Top Lite	Center Lite	Twin Top Lite	1/2 Lite	Twin 1/2 Lite	3/4 oval	Single Vertical Lite	3/4 Lite	Twin 3/4 Lite	Full Oval	Full Lite	Twin Full Lite	1/2 Lite	3/4 Lite	Full Lite
Unit qualifies with:																
Clear (IG) 1" (Intercept)	.24 / .10	.24 / .10	.24 / .10	.24 / .10	.29 / .19	.29 / .19	.26 / .16	.29 / .19	.33 / .26	.33 / .26	.33 / .26	.38 / .34	.38 / .34	.16 / .06	.18 / .08	.20 / .10
Low-E 1" (Cardinal 270 or 366)	.22 / .05	.22 / .04	.22 / .05	.22 / .05	.25 / .09	.25 / .09	.25 / .07	.25 / .09	.28 / .12	.28 / .12	.28 / .12	.31 / .16	.31 / .16	.15 / .05	.16 / .07	.18 / .09
Blinds (Open)	n/a	n/a	n/a	n/a	.30 / .19	.30 / .19	n/a	.30 / .19	.33 / .26	.33 / .26	n/a	.38 / .34	.38 / .34	.16 / .06	.18 / .08	.20 / .10
Decorative Glass	.22 / .09	.22 / .09	.22 / .09	.22 / .09	.26 / .16	.26 / .16	.26 / .16	.26 / .19	.29 / .21	.29 / .21	.30 / .21	.34 / .28	.34 / .28	.15 / .05	.16 / .07	.19 / .09

Doors with no glass (opaque) WILL qualify (U-factor = 0.17)

Grand Marais Smooth or Textured Fiberglass Doors	1/4 LITE				1/2 LITE				3/4 LITE			FULL LITE		SIDELITES		
Description -->	Craftsman	1/2 Rnd Top Lite	Center Lite	Twin Top Lite	1/2 Lite	Twin 1/2 Lite	3/4 oval	Single Vertical Lite	3/4 Lite	Twin 3/4 Lite	Full Oval	Full Lite	Twin Full Lite	1/2 Lite	3/4 Lite	Full Lite
Unit qualifies with:																
Clear (IG) 1" (Intercept)	.23 / .12	.23 / .12	.23 / .12	.23 / .12	.28 / .20	.28 / .20	.27 / .20	.28 / .20	.31 / .26	.31 / .26	.31 / .26	.36 / .34	.36 / .34	.25 / .11	.27 / .15	.31 / .19
Low-E 1" (CS73)	.21 / .10	.21 / .10	.21 / .10	.21 / .10	.24 / .17	.24 / .17	.24 / .17	.24 / .17	.27 / .22	.27 / .22	.26 / .22	.30 / .28	.30 / .28	.22 / .06	.23 / .08	.25 / .10
Blinds (Open)	n/a	n/a	n/a	n/a	.28 / .20	.28 / .20	n/a	.28 / .20	.32 / .26	.32 / .26	n/a	.36 / .34	.36 / .34	.25 / .10	.28 / .13	.31 / .17
Decorative Glass	.21 / .10	.21 / .10	.21 / .10	.21 / .10	.25 / .16	.25 / .16	.24 / .17	.25 / .16	.27 / .21	.27 / .21	.28 / .21	.31 / .27	.31 / .27	.22 / .10	.23 / .13	.25 / .17

Doors with no glass (opaque) WILL qualify (U-factor = 0.16)

Timbergrain® Fiberglass Doors	1/4 LITE		1/2 LITE		3/4 LITE		SIDELITES		
Description	Craftsman	8-Panel Ctr Arch	1/2 Lite	3/4 Oval 3-Panel	3/4 Oval 2-Panel	3/4 Lite 2-Panel Plank	1/2 Lite	3/4 Lite	Full Lite
Unit qualifies with:									
Clear (IG) 1" (Intercept)	.22 / .10	.22 / .10	.27 / .19	.31 / .25	.31 / .25	.31 / .25	.27 / .11	.30 / .15	.33 / .19
Low-E (CS73) 1"	.23 / .09	.23 / .09	.26 / .09	.27 / .21	.27 / .21	.27 / .21	.26 / .09	.27 / .12	.30 / .16
Decorative Glass	.21 / .09	.21 / .09	.24 / .16	.27 / .21	.27 / .21	.27 / .21	.26 / .10	.27 / .13	.30 / .17

Doors with no glass (opaque) WILL qualify (U-factor = 0.15 Flush 0.16 Embossed)

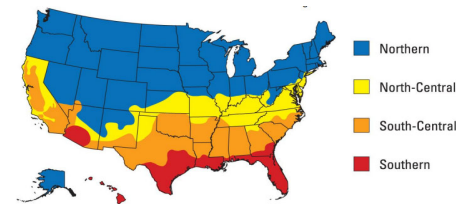
UNIT QUALIFIES FOR ENERGY STAR® UNTIL 10/23/23  
NORTHERN and NORTH-CENTRAL ZONES

ENERGY STAR 7.0 EFFECTIVE 10/23/23

Doors

Glazing Level	U-Factor <sup>1</sup>	SHGC <sup>2</sup>
Opaque	≤ 0.17	No Rating
≤ 1/2-Lite	≤ 0.25	≤ 0.25
> 1/2-Lite	≤ 0.30	Northern North-Central ≤ 0.40
		Southern South-Central ≤ 0.25

Air Leakage for Sliding Doors ≤ 0.3 cfm/ft<sup>2</sup>  
Air Leakage for Swinging Doors ≤ 0.5 cfm/ft<sup>2</sup>



2023 Energy Star® 7.0  
QUALIFYING UNITS MATRIX



AMERICA'S DOORMAKER

Smooth or Stainable Steel Doors (Steel Edge)	1/4 LITE				1/2 LITE				3/4 LITE			FULL LITE		SIDELITES		
Description -->	Craftsman	1/2 Rnd Top Lite	Center Lite	Twin Top Lite	1/2 Lite	Twin 1/2 Lite	3/4 oval	Single Vertical Lite	3/4 Lite	Twin 3/4 Lite	Full Oval	Full Lite	Twin Full Lite	1/2 Lite	3/4 Lite	Full Lite
Unit qualifies with:																
Clear (IG) 1" (Intercept)	.24 / .10	.24 / .10	.24 / .10	.24 / .10	.29 / .19	.29 / .19	.26 / .16	.29 / .19	.33 / .26	.33 / .26	.33 / .26	.38 / .34	.38 / .34	.16 / .06	.18 / .08	.20 / .10
Low-E 1" (Cardinal 270 or 366)	.22 / .05	.22 / .04	.22 / .05	.22 / .05	.25 / .09	.25 / .09	.25 / .07	.25 / .09	.28 / .12	.28 / .12	.28 / .12	.31 / .16	.31 / .16	.15 / .05	.16 / .07	.18 / .09
Blinds (Open)	n/a	n/a	n/a	n/a	.30 / .19	.30 / .19	n/a	.30 / .19	.33 / .26	.33 / .26	n/a	.38 / .34	.38 / .34	.16 / .06	.18 / .08	.20 / .10
Decorative Glass	.22 / .09	.22 / .09	.22 / .09	.22 / .09	.26 / .16	.26 / .16	.26 / .16	.26 / .19	.29 / .21	.29 / .21	.30 / .21	.34 / .28	.34 / .28	.15 / .05	.16 / .07	.19 / .09

Doors with no glass (opaque) WILL qualify (U-factor = 0.17)

Grand Marais Smooth or Textured Fiberglass Doors	1/4 LITE				1/2 LITE				3/4 LITE			FULL LITE		SIDELITES		
Description -->	Craftsman	1/2 Rnd Top Lite	Center Lite	Twin Top Lite	1/2 Lite	Twin 1/2 Lite	3/4 oval	Single Vertical Lite	3/4 Lite	Twin 3/4 Lite	Full Oval	Full Lite	Twin Full Lite	1/2 Lite	3/4 Lite	Full Lite
Unit qualifies with:																
Clear (IG) 1" (Intercept)	.23 / .12	.23 / .12	.23 / .12	.23 / .12	.28 / .20	.28 / .20	.27 / .20	.28 / .20	.31 / .26	.31 / .26	.31 / .26	.36 / .34	.36 / .34	.25 / .11	.27 / .15	.31 / .19
Low-E 1" (CS73)	.21 / .10	.21 / .10	.21 / .10	.21 / .10	.24 / .17	.24 / .17	.24 / .17	.24 / .17	.27 / .22	.27 / .22	.26 / .22	.30 / .28	.30 / .28	.22 / .06	.23 / .08	.25 / .10
Blinds (Open)	n/a	n/a	n/a	n/a	.28 / .20	.28 / .20	n/a	.28 / .20	.32 / .26	.32 / .26	n/a	.36 / .34	.36 / .34	.25 / .10	.28 / .13	.31 / .17
Decorative Glass	.21 / .10	.21 / .10	.21 / .10	.21 / .10	.25 / .16	.25 / .16	.24 / .17	.25 / .16	.27 / .21	.27 / .21	.28 / .21	.31 / .27	.31 / .27	.22 / .10	.23 / .13	.25 / .17

Doors with no glass (opaque) WILL qualify (U-factor = 0.16)

Timbergrain® Fiberglass Doors	1/4 LITE		1/2 LITE		3/4 LITE		SIDELITES		
Description	Craftsman	8-Panel Ctr Arch	1/2 Lite	3/4 Oval 3-Panel	3/4 Oval 2-Panel	3/4 Lite 2-Panel	1/2 Lite	3/4 Lite	Full Lite
Unit qualifies with:									
Clear (IG) 1" (Intercept)	.22 / .10	.22 / .10	.27 / .19	.31 / .25	.31 / .25	.31 / .25	.27 / .11	.30 / .15	.33 / .19
Low-E (CS73) 1"	.23 / .09	.23 / .09	.26 / .09	.27 / .21	.27 / .21	.27 / .21	.26 / .09	.27 / .12	.30 / .16
Decorative Glass	.21 / .09	.21 / .09	.24 / .16	.27 / .21	.27 / .21	.27 / .21	.26 / .10	.27 / .13	.30 / .17

Doors with no glass (opaque) WILL qualify (U-factor = 0.15 Flush 0.16 Embossed)

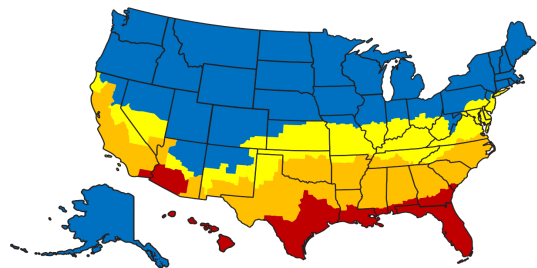
	Product Qualified All 50 states
	Product Qualified Northern/North-Central
	Product Qualified Southern/South-Central

ENERGY STAR® Certification Criteria  
for Residential Doors

ENERGY STAR 7.0 EFFECTIVE 10/23/23

DOORS			
Glazing Level	Climate Zone	U-Factor <sup>1</sup>	SHGC <sup>2</sup>
Opaque	All Zones	≤ 0.17	No Rating
≤ 1/2-Lite	All Zones	≤ 0.23	≤ 0.23
> 1/2-Lite	Northern	≤ 0.26	≤ 0.40
	North-Central	≤ 0.26	≤ 0.40
	South-Central	≤ 0.28	≤ 0.23

Air Leakage for Sliding Doors ≤ 0.3 cfm/ft²  
Air Leakage for Swinging Doors ≤ 0.5 cfm/ft²  
<sup>1</sup> Btu/h-ft²-°F  
<sup>2</sup> Solar Heat Gain Coefficient



# TAYLOR ENTRANCE SYSTEMS - FLORIDA BUILDING CODE APPROVAL SUMMARY



FL#	Product Description					HVHZ	NON HVHZ	IMPACT	Design Pressure			
	Door Type	Configuration	Height	Glazing	Jamb Type				Inswing		Outswing	
									+	-	+	-
8845.1	Steel Edge	X	6'8"	Impact	Wood	Yes	Yes	Yes	50	55	50	55
8845.2	Steel Edge	XO or OX	6'8"	Impact	Wood	Yes	Yes	Yes	50	55	50	55
8845.3	Steel Edge	OXO	6'8"	Impact	Wood	Yes	Yes	Yes	50	55	50	55
8845.4	Steel Edge	XX	6'8"	Impact	Wood	Yes	Yes	Yes	50	55	50	55
8845.5	Steel Edge	OXXO	6'8"	Impact	Wood	Yes	Yes	Yes	50	55	50	55
8845.6	Steel Edge	X	8'0"	Impact	Wood	Yes	Yes	Yes	50	50	50	50
8845.7	Steel Edge	XO or OX	8'0"	Impact	Wood	Yes	Yes	Yes	50	50	50	50
8845.8	Steel Edge	OXO	8'0"	Impact	Wood	Yes	Yes	Yes	50	50	50	50
8845.9	Steel Edge	XX	8'0"	Impact	Wood	Yes	Yes	Yes	50	50	50	50
8845.10	Steel Edge	OXXO	8'0"	Impact	Wood	Yes	Yes	Yes	50	50	50	50
8845.11	Steel Edge	X	6'8"	Opaque	Wood	Yes	Yes	Yes	60	60	60	60
8845.12	Steel Edge	XO or OX	6'8"	Opaque	Wood	Yes	Yes	Yes	60	60	60	60
8845.13	Steel Edge	OXO	6'8"	Opaque	Wood	Yes	Yes	Yes	60	60	60	60
8845.14	Steel Edge	XX	6'8"	Opaque	Wood	Yes	Yes	Yes	60	60	60	60
8845.15	Steel Edge	OXXO	6'8"	Opaque	Wood	Yes	Yes	Yes	60	60	60	60
8845.16	Steel Edge	X	8'0"	Opaque	Wood	Yes	Yes	Yes	50	50	50	50
8845.17	Steel Edge	XO or OX	8'0"	Opaque	Wood	Yes	Yes	Yes	50	50	50	50
8845.18	Steel Edge	OXO	8'0"	Opaque	Wood	Yes	Yes	Yes	50	50	50	50
8846.19	Steel Edge	XX	8'0"	Opaque	Wood	Yes	Yes	Yes	50	50	50	50
8846.20	Steel Edge	OXXO	8'0"	Opaque	Wood	Yes	Yes	Yes	50	50	50	50
9542.1	Steel Edge	X	6'8"	Glazed	Wood	No	Yes	No	40	40	40	40
9542.2	Steel Edge	XO or OX, OXO	6'8"	Glazed	Wood	No	Yes	No	40	40	40	40
9542.3	Steel Edge	XX, OXXO	6'8"	Glazed	Wood	No	Yes	No	40	40	40	40
9542.4	Steel Edge	X	8'0"	Glazed	Wood	No	Yes	No	40	45	40	40
9542.5	Steel Edge	XO or OX, OXO	8'0"	Glazed	Wood	No	Yes	No	40	45	40	40
9542.6	Steel Edge	XX, OXXO	8'0"	Glazed	Wood	No	Yes	No	40	45	40	40
14513.1	Steel Edge	X	7'0"	Opaque	Split Steel	Yes	Yes	Yes	60	60	60	60
14513.2	Steel Edge	X	7'0"	Opaque	Fixed Steel	Yes	Yes	Yes	60	60	60	60
14513.3	Steel Edge	X	7'0"	Opaque	Split Steel	No	Yes	Yes	60	60	60	60
15135.1	Wood Edge	X	6'8"	Glazed	Wood	No	Yes	No	40	40	40	40
15135.2	Wood Edge	XO or OX, OXO	6'8"	Glazed	Wood	No	Yes	No	40	40	40	40
15135.3	Wood Edge	XX, OXXO	6'8"	Glazed	Wood	No	Yes	No	40	40	40	40
15135.4	Wood Edge	X	6'8"	Impact	Wood	No	Yes	Yes	47	47	47	47
15135.5	Wood Edge	XO or OX, OXO	6'8"	Impact	Wood	No	Yes	Yes	47	47	47	47
15135.6	Wood Edge	XX, OXXO	6'8"	Impact	Wood	No	Yes	Yes	47	47	47	47
15135.7	Wood Edge	X	6'8"	Opaque	Wood	No	Yes	Yes	60	60	60	60
15135.10	Wood Edge	XO or OX, OXO	6'8"	Opaque	Wood	No	Yes	Yes	47	47	47	47
15136.11	Wood Edge	XX, OXXO	6'8"	Opaque	Wood	No	Yes	Yes	47	47	47	47
15135.12	Wood Edge	X	8'0"	Opaque	Wood	No	Yes	Yes	60	60	60	60
15135.15	Wood Edge	XO or OX, OXO	8'0"	Opaque	Wood	No	Yes	Yes	50	50	50	50
15135.16	Wood Edge	XX, OXXO	8'0"	Opaque	Wood	No	Yes	Yes	50	50	50	50
15931.1	Timbergrain	X	6'8"	Opaque	Wood	No	Yes	Yes	100	100	100	100
15931.2	Timbergrain	XO, OX or OXO	6'8"	Glazed	Wood	No	Yes	No	55	60	55	55
15932.3	Timbergrain	XX, OXXO	6'8"	Glazed	Wood	No	Yes	No	55	60	55	55
15931.4	Timbergrain	X, OX/XO or OXO	6'8"	Glazed	Wood	No	Yes	No	55	60	55	55
15931.5	Timbergrain	XX or OXXO	6'8"	Glazed	Wood	No	Yes	No	55	60	55	55
15931.60	Timbergrain	X	8'0"	Opaque	Wood	No	Yes	Yes	65	65	70	70
15931.70	Timbergrain	XO, OX or OXO	8'0"	Glazed	Wood	No	Yes	No	55	60	55	55
15932.80	Timbergrain	XX, OXXO	8'0"	Glazed	Wood	No	Yes	No	45	45	45	45
15931.90	Timbergrain	X, OX/XO or OXO	8'0"	Glazed	Wood	No	Yes	No	40	45	40	40
15931.10	Timbergrain	XX or OXXO	8'0"	Glazed	Wood	No	Yes	No	45	45	45	45

**FOR DETAILED INSTALLATION INSTRUCTIONS AND EVALUATION REPORTS VISIT [WWW.FLORIDABUILDING.ORG](http://WWW.FLORIDABUILDING.ORG)**